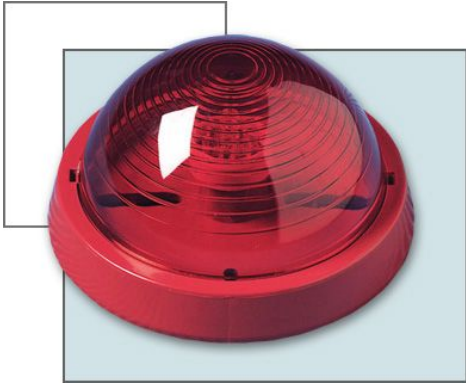


## HC-300L Fire Alarm Indication Light



Model No	HC-300L Fire Alarm Indication Light
Adopted voltage	DC-18~30V (DC-24V)
Adopted current	100mA
Luminous component/Color	Traditional light bulb/red
Size	95mm X 52mm
Weight	80g
Other specifications	LED Light bulb (DC-18-30V 25mA)

## HC-1W Ire Signal Transmitter (Indoor)

Model No	HC-1W Ire Signal Transmitter (Indoor)
Adopted voltage	DC-18~28V (DC-24V)
Adopted current	100mA
Size	138mm x 70mm
Weight	270g
Joint volume	DC-30V 1A



## HC-2W Ire Signal Transmitter (Outdoor)



Model No	HC-2W Ire Signal Transmitter (Outdoor)
Adopted voltage	DC-18~28V (DC-24V)
Adopted current	100mA
Size	138mm X 48mm
Weight	150g
Joint volume	DC-30V 1A